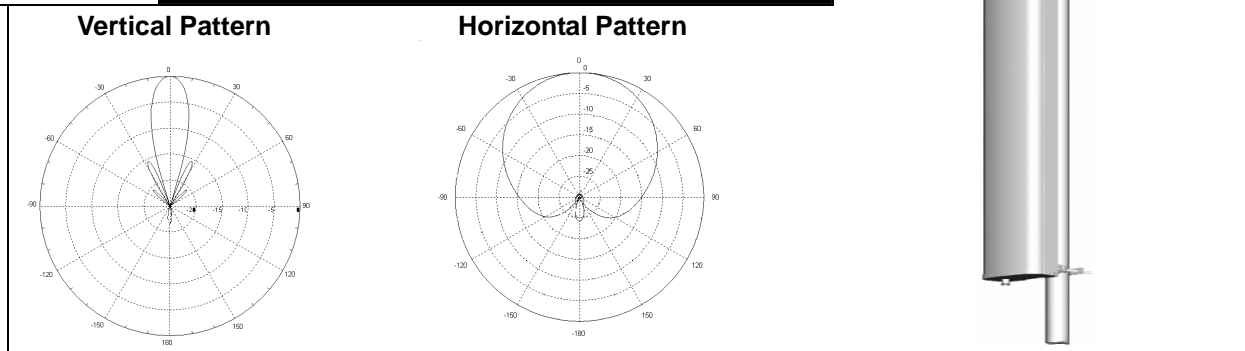


## BAP Panel Antenna Series - Vertical Pol.



Electrical Parameters	BAP400-65-14D
Frequency range	380~470MHz
Gain	14dBi
Polarization	Vertical
Vertical plane -3dB beamwidth	18°
Horizontal plane -3dB beamwidth	65°
Return loss	>14dB
Front to back ratio	>20dB
Max CW power per port	400W
Impedance	50Ω
IMD performance	≤-150dBc
Fixed electrical downtilt	0°
Lighting protection	DC ground
Connector type	DIN 7/16F
Mechanical Parameters	Specification
Rated wind speed	200km/hr
Lateral thrust at the rated wind	Front:2050N/209Kg; Rear:1819N/185Kg; Side:743N/75Kg
Dimensions H x W x D	2150 x 415 x 180mm
Packed size H x W x D	2260 x 520 x 290mm
Net weight (with mounting hardware)	26kg
Operating temperature	Min -40°C Max +60 °C
Radome material	FRP (Waterproof)
Mechanical downtilt max. (with adjustable brackets)	10°
Mounting pole (min/max diameter)	50~100mm
Performance	Specification
Materials:	All internal parts corrosion resistant. All antenna fasteners stainless steel. Bracket assemblies fully galvanized. Radome surface treated for maximum UV protection.
Mounting:	Available with either fixed brackets (non-adjustable) or mechanically adjustable bracket assemblies. Please specify when ordering.
Grounding:	Lower bracket assembly DC ground.

Eyecom company policy is one of continuing improvement; therefore we reserve the right to change this specification without notice.