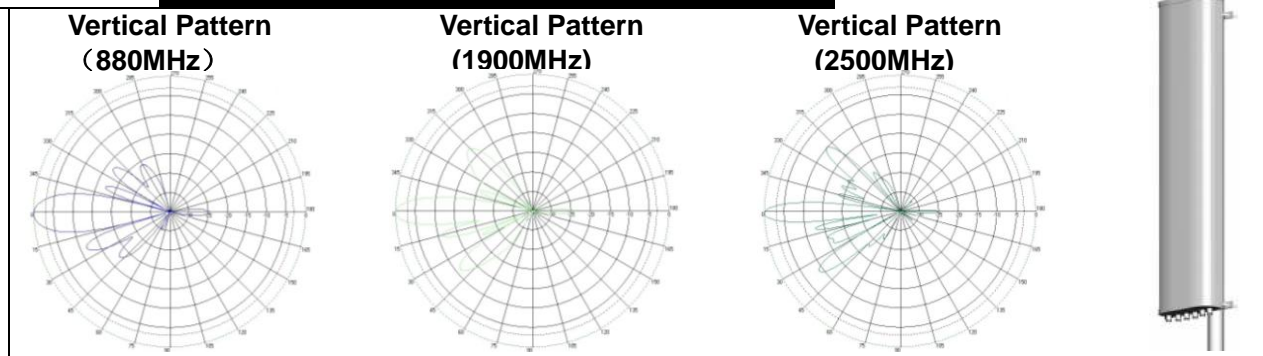


## BAP Tri-Band LET RET Antenna



Electrical Parameters	BAP890-1900-2700-65S-15/16/18DRE		
Frequency range	824~960MHz	1710~2170MHz	2300~ 2700MHz
Gain	15dBi	16dBi	18dBi
Polarization	Dual, slant $\pm 45^\circ$		
Isolation between ports	$\geq 30$ dB	$\geq 30$ dB	$\geq 30$ dB
Isolation between bands	$\geq 30$ dB	$\geq 30$ dB	$\geq 30$ dB
Vertical plane -3dB beamwidth	11.5°	11.4°	7°
Horizontal plane -3dB beamwidth	65°	65°	65°
First upper sidelobe suppression	$\geq 15$ dB	$\geq 15$ dB	$\geq 15$ dB
VSWR	$\leq 1.5:1$		
Front to back ratio	$\geq 30$ dB		
Max CW power per port	250W		
Cross-Polarization Ratio	$\geq 20$ dB@main direction, $\geq 10$ @ $\pm 60^\circ$		
IMD performance(2x43dBm)	$\leq -150$ dBc		
Electrical downtilt range	1~ 10°		
RF Connector numbers/ type	6/DIN-F		
Electrical RCU interface/Numbers**	AISG2.0/3		
Mechanical Parameters	Specification		
Rated wind speed	200km/hr		
Dimensions H x W x D	1280x555x137 mm		
Packed size H x W x D	1380x655x230 mm		
net weight (with mounting hardware)	26kg		
Operating temperature	Min -40°C Max +60 °C		
Radome material	FRP or UV Stable PVC		
Downtilt max. (with adjustable brackets)	22°		
Performance	Specification		
Materials:	All internal parts corrosion resistant. All antenna fasteners stainless steel. Bracket assemblies fully galvanized. Radome surface treated for maximum UV protection.		
Mounting:	Available with either fixed type brackets (non-adjustable) or mechanically adjustable bracket assemblies for extra 1-20 degree mechanical downtilt adjustment		
Grounding:	Lower bracket assembly DC ground.		
Connections:	Remote control electrical downtilt connections are in accordance with AISG standards		

Eyecom company policy is one of continuing improvement, therefore we reserve the right to change this specification without notice

\* diplexed input ports option available \*\* Built-in RCU version available